

## Compact, Configurable, Cost Effective and Best Value Performance

The innovative ProScan 6.4c checkpoint X-ray system delivers an unbeatable combination of compact size and reduced weight, operational flexibility and best value performance. The ProScan platform is an evolution from the widely-deployed and reliable PX and LineScan series conventional X-ray lines, updated to reflect customers' evolving needs. Compatible with L-3's ClearView networking solution, the ProScan 6.4c maximizes operational efficiency and effectiveness.

Across the range of critical infrastructure entry control point needs, the versatile ProScan 6.4c provides a reliable and economical solution. Operators can efficiently and accurately

screen briefcases, backpacks, parcels, packages and other small to medium-sized objects.

High definition imaging and material discrimination by color coding facilitates the rapid detection of a range of threats and items of interest including weapons, narcotics, explosives and other contraband. High spatial resolution provides the ability to detect difficult items such as fine wires and electronic circuitry.

The ProScan 6.4c comes with an intuitive touch screen user interface. A choice among three conveyor lengths and bidirectional operation provide excellent operational flexibility to security managers and operators.



### APPLICATIONS

- Threat detection
- Contraband detection
- Theft prevention
- Regulatory compliance/inspection

### COMPLIANCE

- ISO 9001, ISO 14100, CE, UL-61010-1
- Radiation Safety: U.S. 21 CFR 1020.40



Toll Free  
1-800-930-3766  
[www.securitydetection.com](http://www.securitydetection.com)

## Superb Image Resolution and Clarity

The advanced imaging capability of the ProScan 6.4c raises the standard for small-sized X-ray screening systems and delivers an array of features that give operators the information they need to clear suspicious items.

- X-ray source optimized to deliver superb penetration, image resolution and clarity.
- Best Image First™ feature automatically selects and presents the optimal view, enhancing throughput by reducing repetitive image adjustments.
- TRI-MAT imaging allows operators to easily distinguish between organic/inorganic/metallic materials.
- User-friendly image analysis tools include continuously adjustable contrast, sharpening and color overlay for maximum detection capability.

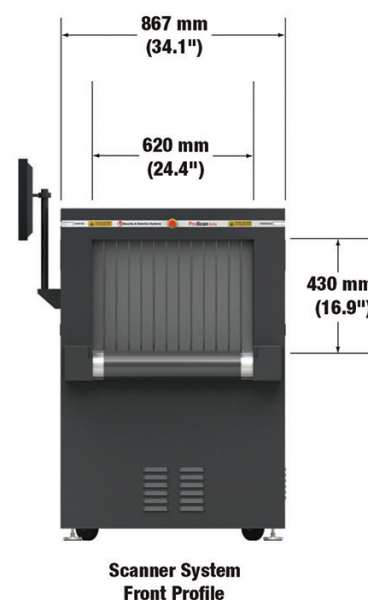
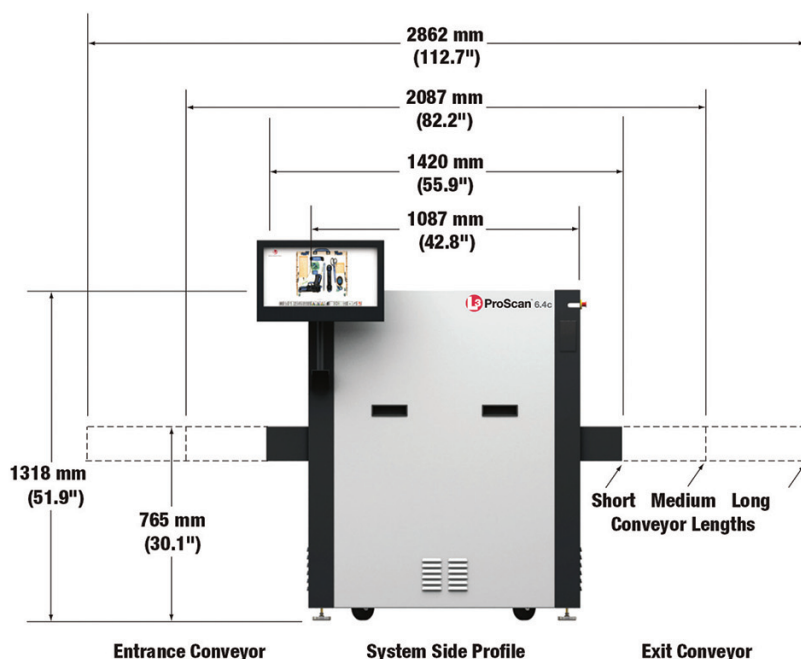
## Flexible Operational Configuration

The ProScan 6.4c can be tailored to meet a range of needs.

- User configurable interface on flat screen multi-touch display allows user configuration of preferences.
- Bi-directional operation allows the system to be incorporated, without modification, into environments that require two-way screening such as mailrooms and loading docks.
- Customizable user-defined Image Archiving (IA) stores over 400,000 images internally. Optional external storage provides additional capacity.

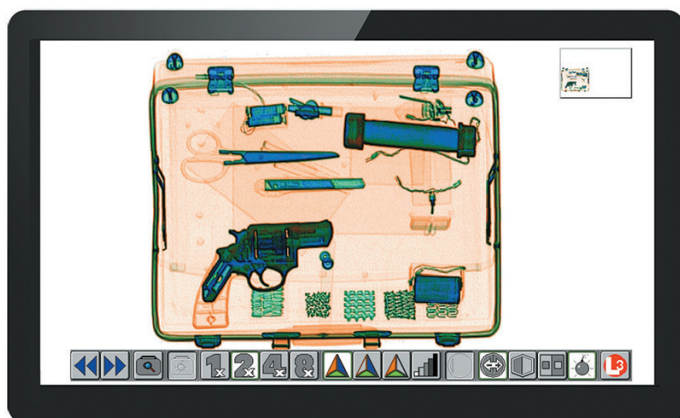
## ClearView Networking Compatible

L-3's ClearView is a networking solution for streamlined, centralized monitoring; alarm escalation; management reporting; system management and complementary sensor integration.



Toll Free  
1-800-930-3766  
[www.securitydetection.com](http://www.securitydetection.com)





*L-3's operator interface is a touch screen that allows continuous heads-up operation using icons displayed on the viewing screen*

## Intuitive, Easy to Use Operator Interface

- 20" multi-touch flat screen display
- User configurable interface stores user preferences



## Features

### Imaging Features

- Best Image First™
- Transparent Color™
- Tri-material discrimination from dual energy scanning
- Organic/inorganic stripping
- Metallic item stripping
- Zoom 2X – 16X or continuous zoom to 64X
- Threat alert
- True 32-bit color processing
- Customizable density & size alert
- Pseudo-color overlay
- Edge enhancement
- Reverse video
- Continuously variable contrast adjustment

### Standard Features

- Compact, lightweight design
- Operator Assist (OA)
- Image Archiving (IA)
- User configurable GUI interface
- Multi-language support
- ClearView network compatible
- 20" touch screen monitor
- Infrared operator-proximity sensor
- Bi-directional scanning

### Optional Features

- Threat Image Projection (TIP)
- EU approved TIP libraries
- Network TIP server
- Roller tables and slide tables (modular 0.5 m and 1.0 m lengths)
- Diverters, Plexiglas dividers, bin returns
- Conveyor length options: short, medium or long
- Entry/exit tunnel shrouds
- Network supervisor workstation
- External UPS
- Operator-proximity sensor foot pad
- Ruggedized mobility kit
- ClearView network
- Message center kit
- Health Canada interlocks kit
- Remote operator console
- Meter kits (bag count, X-ray hours, system hours)
- 165 kg conveyor capacity

## SPECIFICATIONS:

### GENERAL

Height:	1318 mm (51.9")
Width:	867 mm (34.1")
Length:	
Short Conveyor:	1420 mm (55.9")
Medium Conveyor:	2087 mm (82.2")
Long Conveyor:	2862 mm (112.7")
Tunnel Opening:	620 mm (24.4") W x 430 mm (16.9") H
Conveyor Height:	765 mm to 795 mm (30.1" to 31.3")
Power Requirements:	1Ø 100-240 VAC ±10% 50/60 Hz ±1% 1.0 KVA max
Conveyor Speed:	0.22 m per second +2/-8% @ 50 Hz 0.26 m per second +2/-8% @ 60 Hz
Conveyor Capacity:	127 kg, (165 kg optional)
Weight:	483 kg (1065 lb) with medium conveyor
Weight (Crated):	860 kg (1896 lb) with medium conveyor

### X-RAY

Voltage:	150 kV
Duty Cycle:	100%
Cooling:	Sealed oil bath
Beam Orientation:	Vertically upward
Detector Configuration:	1152 photodiodes in L-shaped folded array configuration

### IMAGING AND PERFORMANCE\*

Resolution:	43 AWG standard, 44 AWG typical
Penetration:	41 mm standard, 42 mm typical
Contrast Sensitivity:	4096 gray level stored
Display Monitor:	20" touch screen

### ENVIRONMENTAL

Operating Temperature:	0°C to 40°C (32°F to 104° F)
Storage Temperature:	-20°C to 50°C (-4°F to 122°F)
Humidity:	95% non-condensing
Noise Level:	<70dB (A)

### RADIATION SAFETY

All L-3 Communications Security & Detection Systems X-ray systems are certified to be in full compliance with all radiation safety requirements and external emissions limits as specified in the United States Code of Federal Regulations, Title 21, Section 1020.40 (21 CFR 1020.40) that apply to our products. Typical leakage radiation is less than 0.1 mR/hr.

### OPERATIONAL STANDARDS

- Complies with the U.S. Code of Federal Regulations:
  - CDRH 21 CFR 1020.40 Cabinet X-ray Systems
- NRTL certified to ANSI/UL 61010-1, CAN/CSA 22.2 No. 61010-1 and CE compliant.
- Complies with CDRH (FDA) requirements, including all labeling requirements.
- Designed for TIP1A/TIP1I/STIP compliance.

### DESIGN POLICY

L-3 Communications Security & Detection Systems reserves the right to change specifications in the course of continuous improvement. Specifications are provided for reference only and actual equipment may differ slightly from the description given. Typical dimensions are within ± 5% of nominal values.

### COMPLIANCE

- ISO 9001, ISO 14100, CE, UL-61010-1
- Radiation Safety: U.S. 21 CFR 1020.40



Toll Free  
1-800-930-3766  
[www.securitydetection.com](http://www.securitydetection.com)