

US / INTERNATIONAL
PN 1167410 / 1167420



CS 5000 Walk-Through Metal Detector

The CS 5000 is one of the industry's most economical and effective walk-through metal detectors. Its microprocessor technology offers greater sensitivity for detecting weapons from the archway to the floor. It is constructed with attractive scratch and mar-resistant laminate with resilient end caps to endure high-volume security checkpoint usage.

Features

- **Microprocessor technology** in detection and control circuitry—includes 20 standard application programs.
- **Overhead control unit:** LCD, alarm light, LED bar graph and control touchpads—plus all wiring, connections and electronics—are integrated into a single overhead compartment to eliminate exposure of wires and the external control box.
- **Uniform coverage** from archway to floor.
- **Greater sensitivity** for detecting metal weapons—maximum of 200 distinct sensitivity levels.
- **Continuous online report** of operating status.
- **Tamper proof settings** through computerized access codes.
- **Three levels** of ankle-boost sensitivity.
- **Self diagnostic program:** complete and automatic.
- **Noise reduction** to prevent false alarms.
- **Rugged, lightweight design** for simple maintenance and easy portability.
- **Easy assembly:** designed with only four (4) pieces and eight (8) screws. Simple-to-follow instructions.
- **Optional battery pack** for use anywhere; provides up to 20 hours of backup.
- **Limited 24-month warranty:** parts and labor.



▲ The Garrett CS 5000's control touchpads allow security supervisors to select from 20 standard application programs.

Cost Effective Solid Security

This detector offers economy along with solid performance for high-volume security checkpoint stations.

Overhead Control Unit

LCD display, alarm lights, LED bar graphs and control touchpads plus all wiring, connections and electronics are integrated into a single overhead compartment which eliminates exposure of wires and external control box.

Microprocessor Controlled

State of the art microprocessors ensure sensitivity and flexibility of programming with a maximum of 200 distinct sensitivity levels.

Audible and Visual Alarms

Audible and visual alarms are activated when a target amount of metal is detected; LED bar graph indicates the amplitude of the alarm signal.

Detection Field

Digital controlled pulse induction technology—powered by microprocessors—is utilized in both detection and control circuitry. The CS 5000 is designed for tailoring specific programs to fulfill various security requirements.

Rugged Design

Rugged, yet lightweight design for simple maintenance and quick, easy portability; MagnaDolly accessory also available.

Passageway Interior	Overall Exterior	Shipping
Width 30" (0.7 m)	Width 35" (0.9 m)	Width 35.5" (0.9 m)
Height 80" (2 m)	Height 87" (2.2 m)	Height 91.5" (2.3m)
Depth 23" (0.5 m)	Depth 23" (0.5 m)	Depth 6.25" (1.5m)

Shipping Weight: 136 lbs. (61.8 kg)



WALK-THROUGH DETECTOR ACCESSORIES



Desktop Remote Control with Zone Indication Part No. 2266400

For remote operation of the detector from up to 50 feet (standard). Contact Garrett for optional lengths
For use with the Garrett PD 6500i.

Desktop Remote Control
Part No. 2225600
For remote operation of the MT 5500, MS 3500 or CS 5000 detectors from up to 50 feet (standard).
Contact Garrett for optional lengths.



Battery Backup Module

Conveniently allows multiple hours of backup use. Hinged door protects all interior wiring and components.

PD 6500i: Up to ten (10) hours backup. Charger included.
Part No. 2225400 (Euro Part No. 2225470)

MT 5500: Up to twenty (20) hours backup.

Part No. 2225770 (Euro Part No. 2225780)
CS 5000: Up to twenty (20) hours backup.
Part No. 2225700

MS 3500: Up to twenty (20) hours backup.
Part No. 2225700



Adhesive Floor Mount Kit

Part No. 1604100
4 included.

For use with the Garrett PD 6500i.



10 ft. Cord Jumper Part No. 9431900

Allows multiple walk-through units, in close proximity, to be linked to the same power source.



Operational Test Piece (OTP) Part No. 1600600

Designed to FAA 3-gun test requirements.
Can be used with all Garrett model detectors.



Flat Test Piece (FTP) Part No. 1620570

Designed to represent a small knife.
For test use with the Garrett PD 6500i.



Removable MagnaDolly Part No. 1168000

Removable wheel assembly for easy portability.



Stabilizer Base Part No. 1603900

Can be used with PD 6500i, MT 5500 or CS 5000 model walk-through detectors.

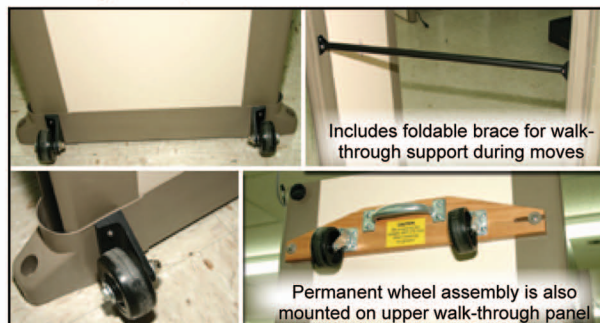


Floor Anchor Kit Part No. 1604000

Provides excellent stability for the MS 3500 under all operating conditions.

Permanent MagnaDolly Part No. 1169000

Permanently fastens to the PD 6500i, MT 5500 or CS 5000 for easy portability. *Requires installation. Permanent MagnaDolly is best installed at Garrett factory at time of purchase.*



Includes foldable brace for walk-through support during moves

Permanent wheel assembly is also mounted on upper walk-through panel

Garrett has the walk-through metal detector accessories you need to set up an efficient and effective security screening checkpoint.



Control Monitor Analyzer (CMA)

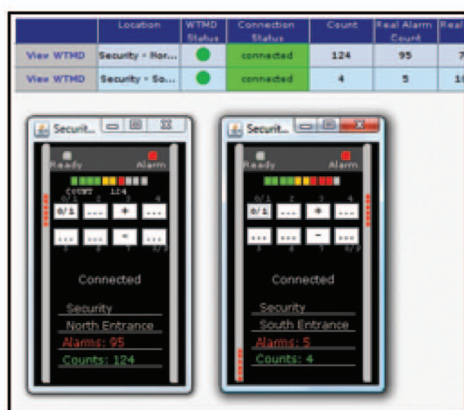
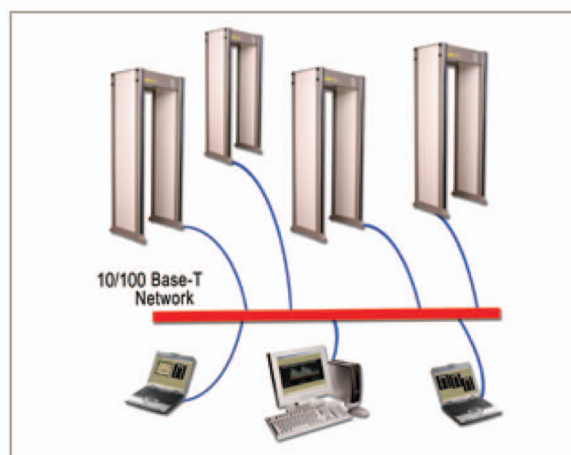
The CMA Interface Module is used with a 10/100baseT network and a personal computer. It allows control, real time monitoring and diagnostics from a remote location. The internal memory records all changes to settings and passenger traffic and alarm history for analytical evaluation.

For use with Garrett PD 6500i, MT 5500 or CS 5000 models.

Part No. 1168310

- Gain real-time access to all walk-through detectors on your network.
- Utilize group management function to control settings and analyze data on multiple walk-through detectors at one time. (With Garrett PD 6500i only.)
- Analyze security checkpoint alarm rates, patron counts and other diagnostic statistics. (With Garrett PD 6500i only.)
- Check settings and diagnose issues with detectors on your network.

Real-time network access to your metal detector with Garrett's CMA Module – now with group management capabilities.



MONITOR

▲ View and save downloaded data from all the walkthroughs in your network to monitor throughput counts and alarms.

